



DRIVER INSTALLATION GUIDE

Please read this installation guide before installing the USB driver of the cloning cable or the data cable.

NOTE:

- The USB driver cannot be used with Microsoft® Windows® 8.1 and Microsoft® Windows® 8.
- These instructions are based on using Windows 7.

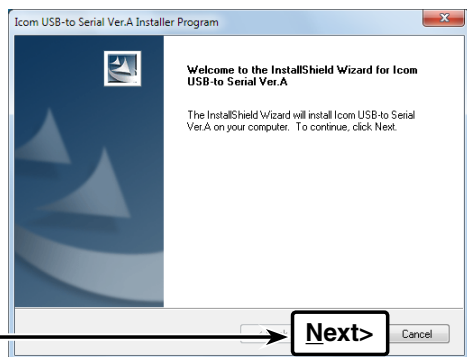
NOTE:

- After the USB driver installation has been completed (Step 1), connect the cable to the PC (Step 2).
- The displayed dialog boxes, indications or operations may differ slightly from the following instructions, depending on your operating system, system settings and its service pack level.

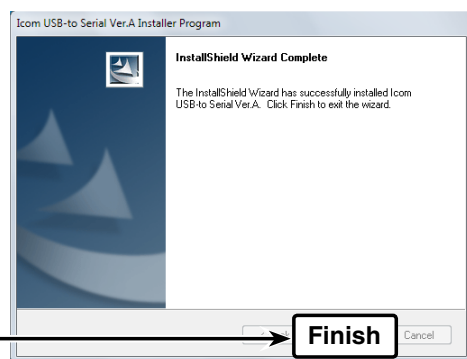
DRIVER INSTALLATION (STEP 1)

When installing the USB driver, log in as the **administrator**.

- ① Make sure Windows has completed its start-up, and no other applications are running.
- ② Open the unzipped folder in the file downloading procedure.
- ③ Double click "ICOM USB Driver\Installer_A.exe."
 - When "User Account Control" appears, click [Yes] to continue.
- ④ "Welcome to the InstallShield Wizard for ICOM USB-to serial Ver. A" appears.
Click [Next >] to begin the installation.



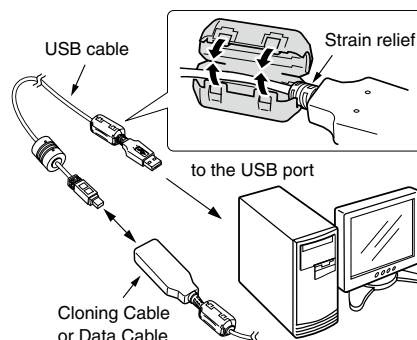
- ⑤ If "Windows Security" appears, click "Install."
- ⑥ After the installation has completed, "InstallShield Wizard Complete" appears.
Click [Finish].



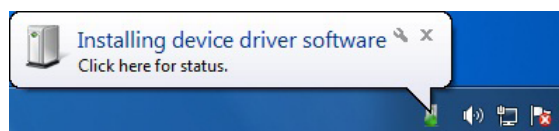
CABLE CONNECTION (STEP 2)

After completing Step 1, connect the cable to the PC, then the PC automatically starts the USB-to-Serial Comm Port installation.

- ① Connect the cloning cable or data cable to the USB cable, and then connect the USB cable to the PC's USB port, as illustrated below.
 - Attach the Ferrite EMI filter to the strain relief of the USB cable.



- ② This dialog box appears on the desktop. Wait a moment until it changes.



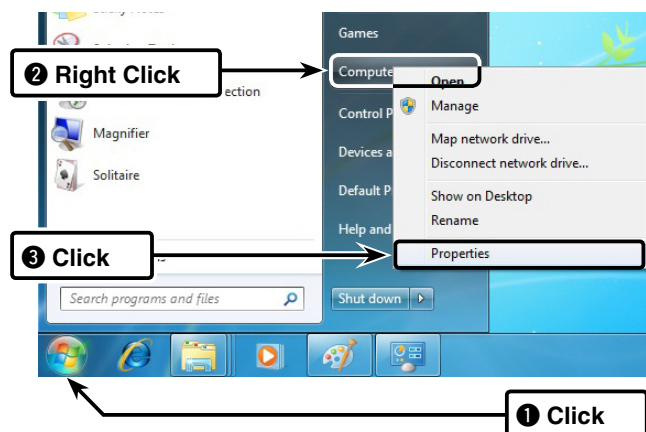
- ③ The USB driver installation is complete when this dialog box appears.



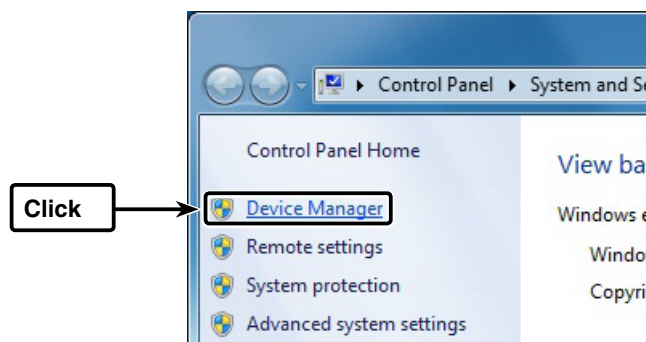
COM PORT CONFIRMATION (STEP 3)

After the driver installation has been completed, confirm the driver availability and the port number.
The COM port number is used to set communication with the cloning software.

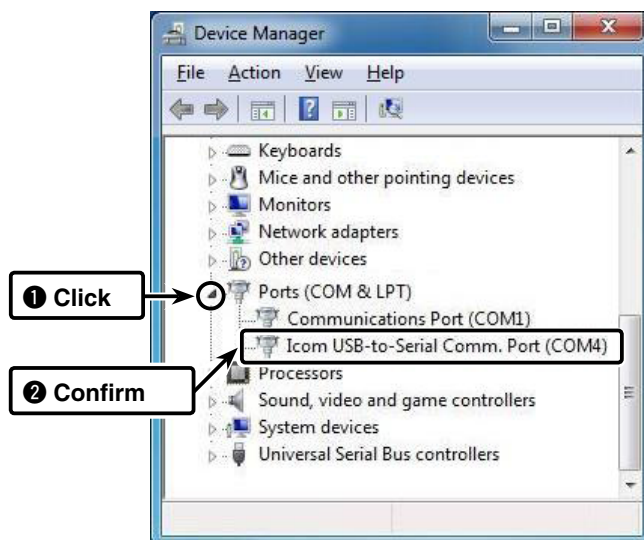
- ① Click the Windows “START” icon.
- ② Right click [Computer] in the <Start> menu, and then click [Properties], as shown below.
 - (Control Panel ► System and Maintenance ►) “System” appears.



- ③ Click [Device Manager].
 - “Device Manager” appears.



- ④ Click “►” next to “Ports (COM&LPT).”
Confirm “Icom USB-to-Serial Comm. Port (COM*)” is displayed.
 - In this example, the COM port number is “4.”



- If the COM port number is not displayed, or several numbers are displayed at the same time like “Icom USB-to-Serial Comm. Port (COM*)” (COM*), the driver may not be installed properly. In such case, uninstall the USB driver and install it again.
- You can uninstall the program using the “Uninstall a program” in the Windows Control Panel.

Icom, Icom Inc. and the Icom logo are registered trademarks of Icom Incorporated (Japan) in Japan, the United States, the United Kingdom, Germany, France, Spain, Russia and/or other countries.

Adobe and Reader are registered trademarks of Adobe Systems Incorporated in the United States and/or other countries.

Microsoft, Windows and Windows Vista are registered trademarks of Microsoft Corporation in the United States and/or other countries.

All other products or brands are registered trademarks or trademarks of their respective holders.